

Phospho-S6K Antibody [p-p70S6K] (pS418) (F48493)

Catalog No.	Formulation	Size
F48493-0.4ML	In 1X PBS, pH 7.4, with 0.09% sodium azide	0.4 ml
F48493-0.08ML	In 1X PBS, pH 7.4, with 0.09% sodium azide	0.08 ml

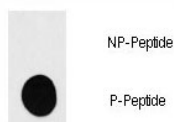


Citations (1)

[Bulk quote request](#)

Availability	1-3 business days
Species Reactivity	Human
Predicted Reactivity	Bovine, Mouse, Rabbit, Rat
Format	Antigen affinity purified
Clonality	Polyclonal (rabbit origin)
Isotype	Rabbit Ig
Purity	Antigen affinity
UniProt	P23443
Applications	Dot Blot : 1:500
Limitations	This phospho-S6K antibody is available for research use only.

Dot blot analysis of phospho-S6K antibody. 50ng of phos-peptide or nonphos-peptide per dot were spotted.



Description

p70 S6K is a member of the RSK (ribosomal S6 kinase) family of serine/threonine kinases. This kinase contains 2 non-identical kinase catalytic domains and phosphorylates several residues of the S6 ribosomal protein. The kinase activity of this protein leads to an increase in protein synthesis and cell proliferation. Amplification of the region of DNA encoding this gene and overexpression of this kinase are seen in some breast cancer cell lines. Alternate translational start sites have been described and alternate transcriptional splice variants have been observed but have not been thoroughly characterized.

Application Notes

Titration of the phospho-S6K antibody may be required due to differences in protocols and secondary/substrate sensitivity.

Immunogen

This phospho-S6K antibody was produced from rabbits immunized with a KLH conjugated synthetic phosphopeptide corresponding to amino acid residues surrounding pS418 of human RPS6KB1.

Storage

Aliquot the phospho-S6K antibody and store frozen at -20oC or colder. Avoid repeated freeze-thaw cycles.